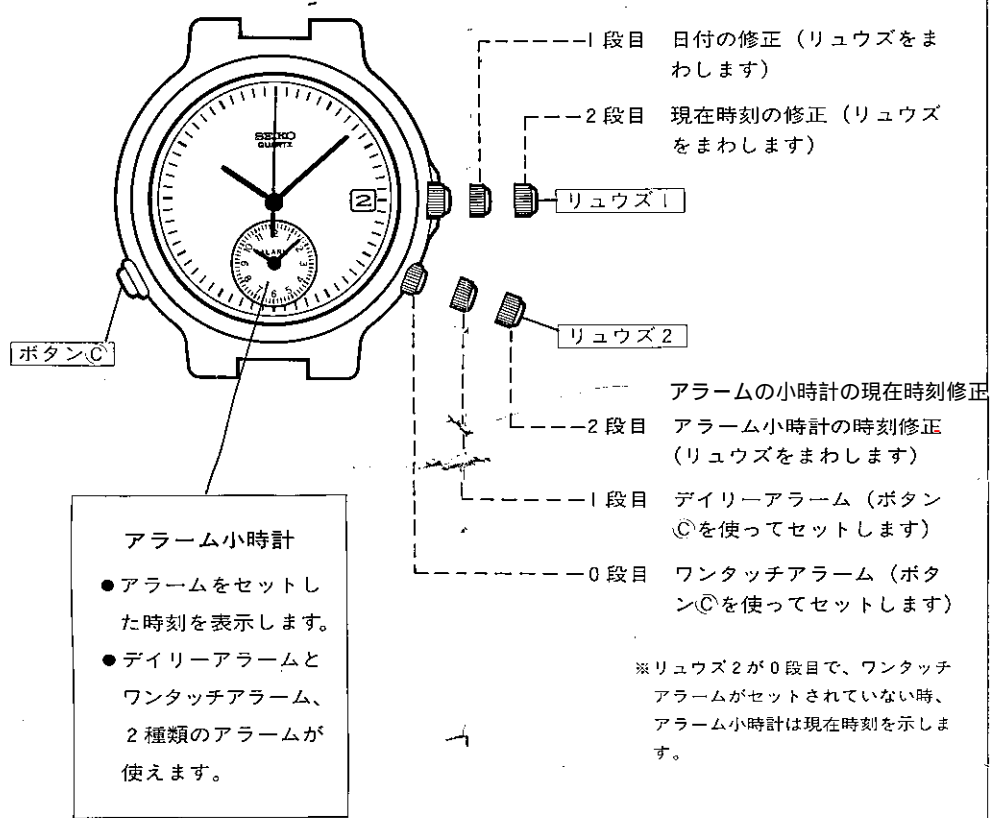
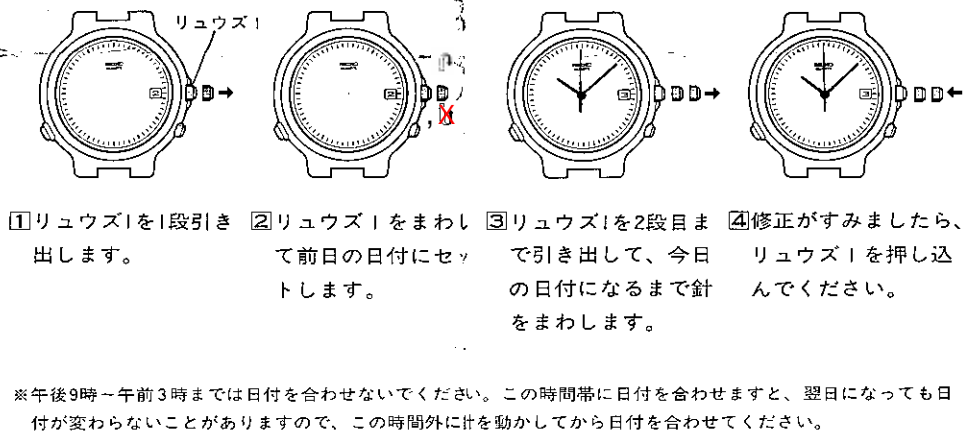


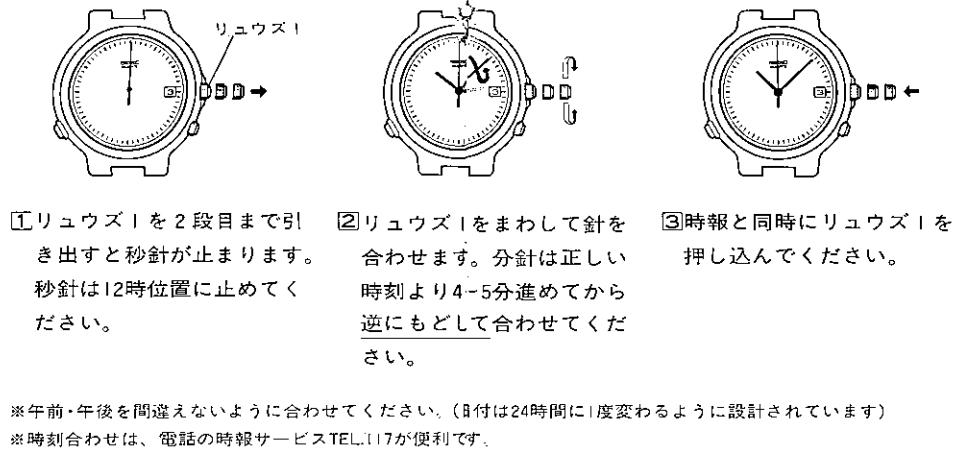
■各部の名称とはたらき



■日付の合わせかた



■時刻の合わせかた

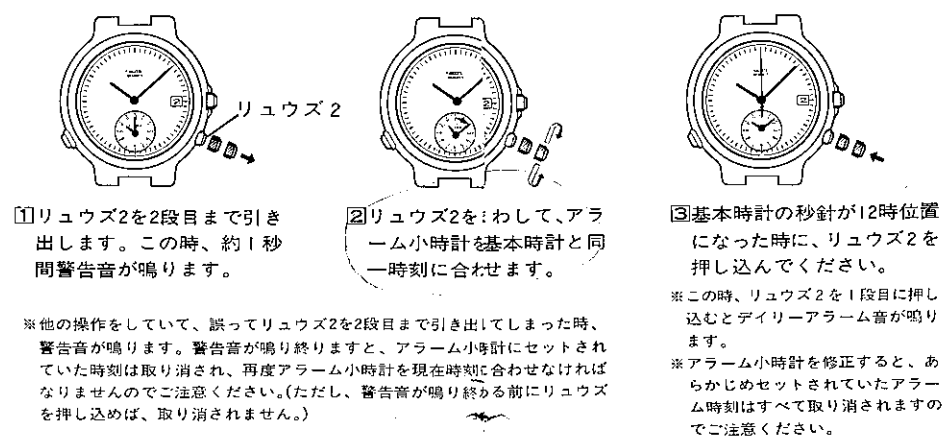


■製品仕様

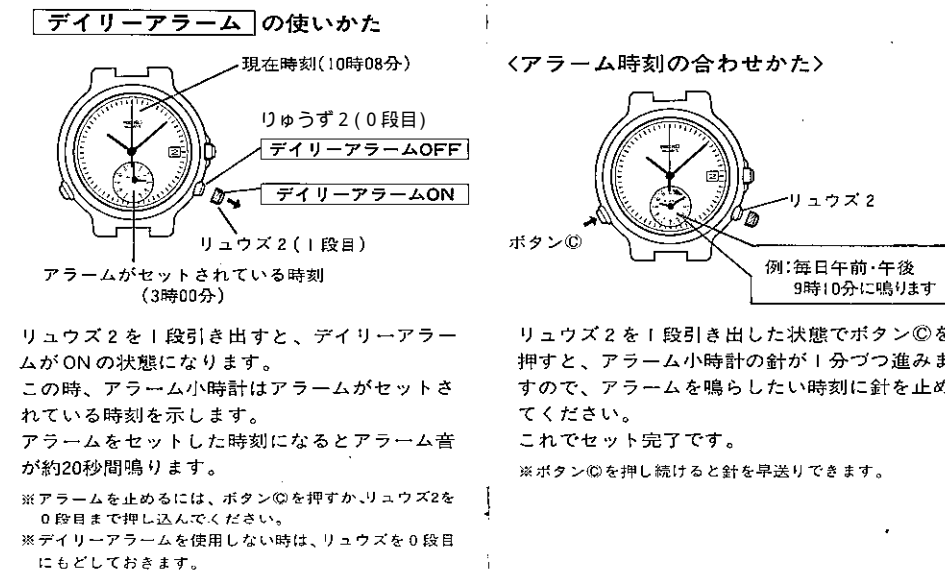
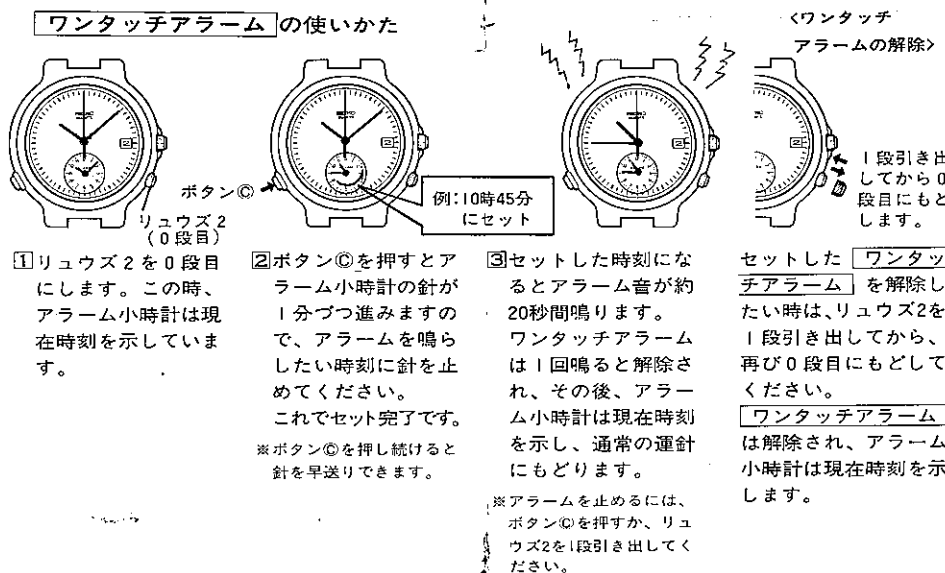
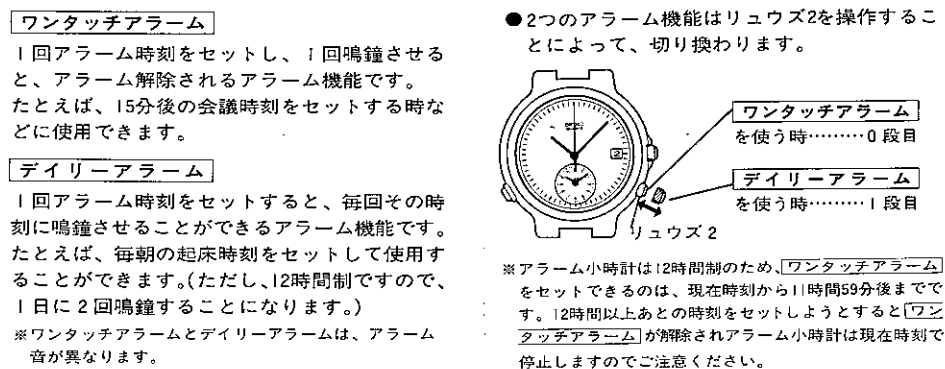
1. 水晶振動数……………32,768Hz (Hz=1秒間の振動数)
 2. 携帯精度……………常温 (5℃～35℃)において月差±15秒以内 (アラーム目安精度±1分)
 3. 作動温度範囲……………-10℃～+60℃
 4. 駆動方式……………ステップモーター式
 5. 表示内容……………**基本時計**……………時・分・秒 (1秒ステップ運針)
アラーム部……………時・分
 6. 使用電池……………小型銀電池 SB-BP 1個
 7. 電池寿命切れ予告機能つき
 8. 電子回路……………C-MOS-LSI 1個
- ※仕様は改良のため予告なく変更することがあります。

■アラームの使いかた

- 12時間制で1分単位のアラームセットができます。
- アラームを使用する前にアラーム小时計を現在時刻に合わせます。

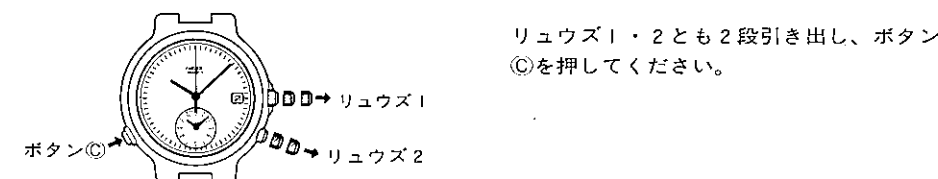


- アラームには **ワンタッチアラーム** と **デイリーアラーム** の2種類の機能があります。

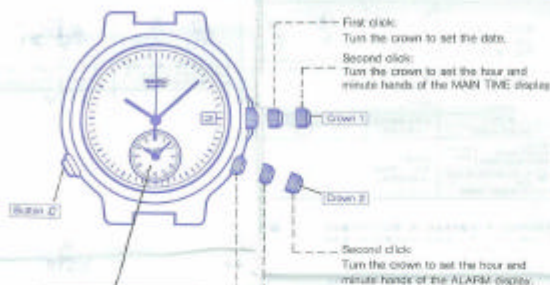


■システムリセットについて

万一、針が通常動作と異なる動きをした場合、以下のような操作を行なってください。時計内部のシステムがリセットされ、正常に機能するようになります。



■ DISPLAY AND CROWN/BUTTON OPERATION

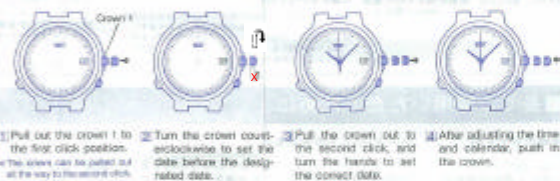


ALARM display

- Displays the designated alarm time.
- Regular alarm and single-time alarm are available.

When crown "2" is at the normal position and the single-time alarm is engaged, the alarm hour and minute hands indicate the current time.

■ TO SET THE DATE



Do not set the date when the hands are pointing to the line between 6 P.M. and 1 A.M. If the setting of the date is made after the hands are pointing to the line between 6 P.M. and 1 A.M., the date will not change to the next day. Please set the date after 12:00 P.M. the next day during the above period.

■ TO SET THE TIME



While setting the time, be sure to check that the correct A.M. or P.M. period is set. The date will change automatically once every 24 hours.
Telephone time-zoning service (if any) might be helpful when you set the time.

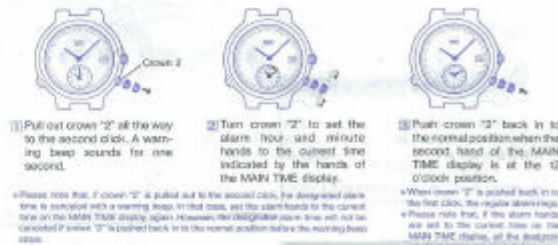
■ SPECIFICATION

- Frequency of crystal oscillator 32,768 kHz (HE-Hertz) Cycles per second
- Loss/gain (monthly rate) Less than 36 seconds at normal temperature range (0°C~35°C) (ATF~92%)
- Accuracy of the alarm (monthly rate) 1 minute at normal temperature range (5°C~35°C)
- Operation temperature range 0°C~50°C (32°F~142°F)
- Driving system Step motor
- Display system (Main time) Hour, minute and second hands.
(ALARM display) Hour and minute
- Battery Silver oxide battery, BS-6P, 1 piece
- Battery life indicator By the second hand
- IC (Integrated Circuit) C-MOS-LSI, 1 piece

* The specifications are subject to change without prior notice, for product improvement.

■ HOW TO USE THE ALARM

The alarm can be set in minutes on a 12-hour basis. Before using the alarm, be sure to set the alarm hour and minute hands to the current time.



The watch is equipped with **single-time alarm** and **regular alarm** functions.

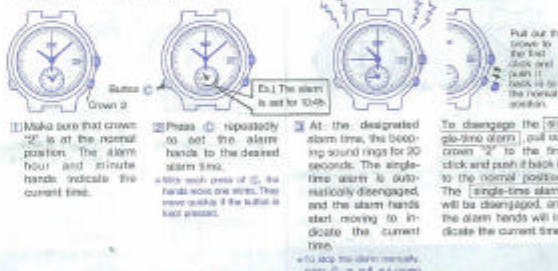
Single-time alarm
The single-time alarm can be set to ring only once at a designated alarm time. As it rings, it is automatically disengaged. For example, you can use the single-time alarm to remind you of a meeting which is to start 15 minutes later.

Regular alarm
The regular alarm can be set to ring at a designated time on a 12-hour basis. Once the regular time is set, it rings at a designated time regularly on a 12-hour basis. For example, you can use the alarm to wake you up every morning. However, please note that the alarm rings twice a day at the same time in A.M. and P.M. periods.

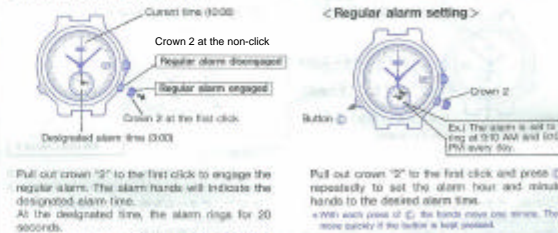
The single-time alarm and regular alarm are engaged and disengaged by operating crown "2".

The ALARM display indicates the time in the 24-hour cycle time. Therefore, it is necessary to set P.M. and A.M. by using the date window and the current P.M. or A.M. The alarm will be disengaged automatically when the date window indicates the current time.

■ How to use the single-time alarm



■ How to use the regular alarm



■ RESETING THE BUILT-IN IC

In case any of the watch hands should move improperly, follow the procedure below. The built-in IC will be reset, and normal movement of the hands will return.

